



ANTS - Automatic Network Test System

ANTS PM – Passive Monitoring



 **nts**
are everywhere



ANTS PM – Passive Monitoring

Telco services: support transformation with passive monitoring and advanced End-To-End correlation ...

Aubay is a Company founded in 1998 that currently operates in the European market in seven Countries, France, Italy, Spain, Portugal, Belux and UK with around 7300 people and a turnover of 470,6 M€.

Aubay delivers product and services on different segments including Banking and Finance, Insurance, Industry and Transports, Utility, Administration, Telco and Media.

From more than 20 years Aubay develops ANTS (Automatic Network Test System), an assurance solution dedicated to the Telco market for Network Operators and Service Providers

To achieve growth objectives, most telecom operators and service providers expect to accelerate the launch and roll-out of new technologies and services. In such a dynamic context ANTS can help telecom operators assuring their customers' user experience. In parallel, ensuring revenue accuracy is mandatory to control the top and bottom lines, and to meet the regulatory requirements imposed by governing rules.

ANTS assurance solution is the answer to the increasing complexity of telecommunication world needs, integrating E2E testing, Network Elements Counters analysis and Passive Monitoring. ANTS allows for cross-correlation among different information sources to show the complete overview of network infrastructure and services.



ANTS SA è la piattaforma progettata per supportare il test attivo E2E su rete Fissa (PSTN, ISDN, ethernet) e Mobile (da 2G fino a 4G+ 5G, IoT via Home PLMN).

ANTS DT è l'applicazione Drive Test di ANTS completamente integrata con tutte le altre applicazioni. ANTS DT indirizza l'ottimizzazione ed il benchmarking delle reti e tra diversi Operatori.

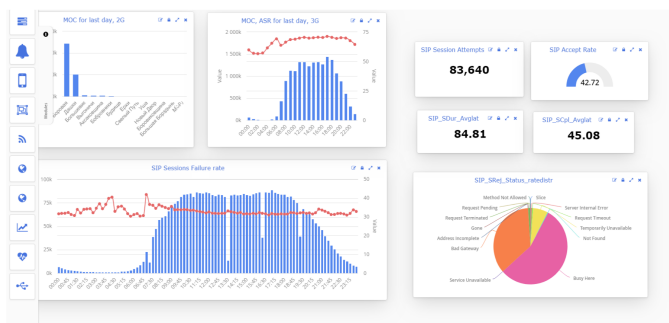
ANTS GRA è la piattaforma gestita da Aubay distribuita in 120 paesi che consente di eseguire test di roaming E2E. ANTS GRA supporta gli standard IREG, le misure della QoS ed il rilevamento di frodi come il Simbox e deviazioni su servizi OTT.

ANTS RA è la soluzione per Revenue Assurance e Customer Traffic Analysis che consente di raccogliere CDR / xDR e contatori da qualsiasi fonte disponibile. ANTS RA fornisce KPI in tempo quasi reale per l'identificazione e l'analisi di eventuali perdite di fatturato.

GEO ANTS è l'applicazione progettata da Aubay per supportare analisi e indagini da informazioni georeferenziate. Geo ANTS può raccogliere dati dall'app MobANTS e dai sistemi ANTS di Drive Test. L'app MobANTS può essere integrata in altre applicazioni utilizzando i suoi SDK/NDK per la raccolta di informazioni in modalità crowdsourcing.

ANTS PM è l'applicazione ANTS per il monitoraggio della rete con sonde passive. ANTS PM consente di effettuare un monitoraggio dei link della core network, IMR e verso i carrier internazionali sia per quanto riguarda la segnalazione che il traffico utente. ANTS PM dispone di funzioni DPI per l'analisi del traffico dati.

ANTS now offers a solution that fully develops the synergy between the generation of End-To-End active tests and a complete Network Monitoring platform that integrates different methodologies to guide the Operator in the continuous improvement of the quality of the service. With the addition of the Passive Monitoring solution to its portfolio, ANTS provides an objective picture of the network functionalities and performances where the new architectures and technologies resulting from the advent of 5G are integrated.



Main application for ANTS PM are highlighted hereafter:

- Real-time network monitoring for quality assurance
- Supports CS & PS Core Network interfaces (ISUP, SIP, MAP, CAP, GTPv1 & GTPv2, Diameter...).
- Full end-to-end correlation with message decoding down to bit level
- Online, on-demand subscriber tracing
- Advanced user content analysis for PS (DPI based) and CS (voice waveform analysis) services
- Advanced RAN and shared RAN analysis (2G,3G,4G) based on signaling interfaces (A, Abis, Gb, Iu, Iub) and vendor traces processing
- Rich set of KPI's, real-time alarming, xDR streaming

by automatically running defined tests according to your individually ANTS monitoring system enables real-time monitoring of all signalling messages transported over selected interfaces of the Mobile Telecommunication Network. Monitored messages are captured, decoded, analyzed and correlated with other messages at the various levels of signalling transactions. In addition, ANTS generates a rich set of statistics based directly on these messages from all the completed transactions. Access network for 2G up to 5G are supported as well.

ANTS PM Traffic Analyzer allows to efficiently investigate your network traffic:

- Visualise traffic metrics (volume, bytes/packets sent, etc.) over time
- Shows traffic distribution per nodes or per subscriber
- Optionally, displays also service/protocol distribution (DPI)



Thanks to its modular design ANTS PM provides the solution for the following applications



Session Analyser

Browse, view and analyse correlated signalling messages and user-plane IP flows



Performance Analyser

Visualise collected KPI's, counters and statistics in various dimensions. Intuitive root-cause analysis with customised dashboards



Traffic Analyser

Visualise UP traffic quality parameters, service and protocol distribution



Alarms

Configure and browse alarms generated by statistic-watchdog, HVA application and ANTS system

NETWORK MONITORING

Continuous optimization is a relevant part of network activities, particularly in today's times when networks have dynamic configurations.

The network capacity has to continuously change due to an ever-growing traffic demand and on different locations, network elements are regularly updated and coverage is extended.

Continuous optimization can be seen as a cyclic process involving data collection and data analytics.

- 600+ KPIs calculated for all major protocols.
- Daily, hourly, minute aggregation per network element, signalling relation, cell, TAC, etc.
- KPIs export & streaming.

